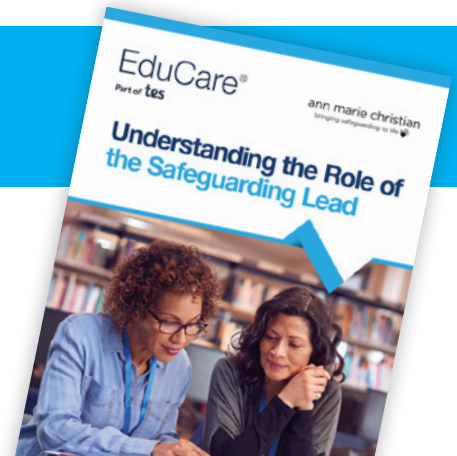


Understanding the Role of the Safeguarding Lead

Everyone working or volunteering in a school should be aware of the importance of the role of the safeguarding lead. Written in partnership with Ann Marie Christian, Safeguarding Expert, this course will help you understand the position in more detail and how it relates to your own role.



Key features

- One module with a multiple-choice questionnaire
- One CPD credit*
- Optional narration of the course module and questionnaire for accessibility
- Personalised downloadable certificate
- 70% pass mark
- Printable module for future reference

*1 CPD credit equals up to 1 hour of learning

Course content


The course covers:

- Child abuse and neglect
 - Background information and statistics
- Legislation and guidance
 - Nation-specific details
- Role of the safeguarding lead
 - Terminology
 - Appointment
 - Governance
- Responsibilities of the safeguarding lead
 - Child protection policy
 - Staff training
 - Raising awareness
 - Safer recruitment
 - Receiving and managing safeguarding and welfare concerns
- Safeguarding in practice
 - Raising concerns
 - Reporting
 - Next steps following a report

This course is suitable for

Everyone working or volunteering in a school.

Legislation



Scotland

National guidance for child protection in Scotland provides the framework at local level for working together to safeguard and promote child wellbeing.

Getting it Right for Every Child (GIRFEC) is the Scottish approach to the wellbeing of children and young people.



Key features

- Visually engaging and interactive.
- Answer explanations for those who achieve the pass mark.
- Additional resources to expand learning including links to relevant legislation and guidance.

Responsibilities

DSLs are responsible for. Click each point to learn more.



Keeping the child protection policy and any other related policies up to date. They must also ensure that all staff and volunteers are aware of all the policies and understand them and they are publicly available where required.



Next steps

An initial Child Protection Case Conference, sometimes referred to as an ICPC, is a multi-agency meeting through which the DSL should attend as a key professional.

They will be expected to report on the child's:

Click the bullet points to learn more.



- academic attainment
- behaviour
- attendance
- wellbeing

Why choose us?



“The EduCare training modules include a wide variety of sources of information and a very current view of the issue. They are the fastest and most thorough way of accessing information for myself or my team.”

Alexandra Ihringova
Student Support Coordinator/Burntwood School

www.educare.co.uk
01926 436 211
online@educare.co.uk

ann marie christian
bringing safeguarding to life

